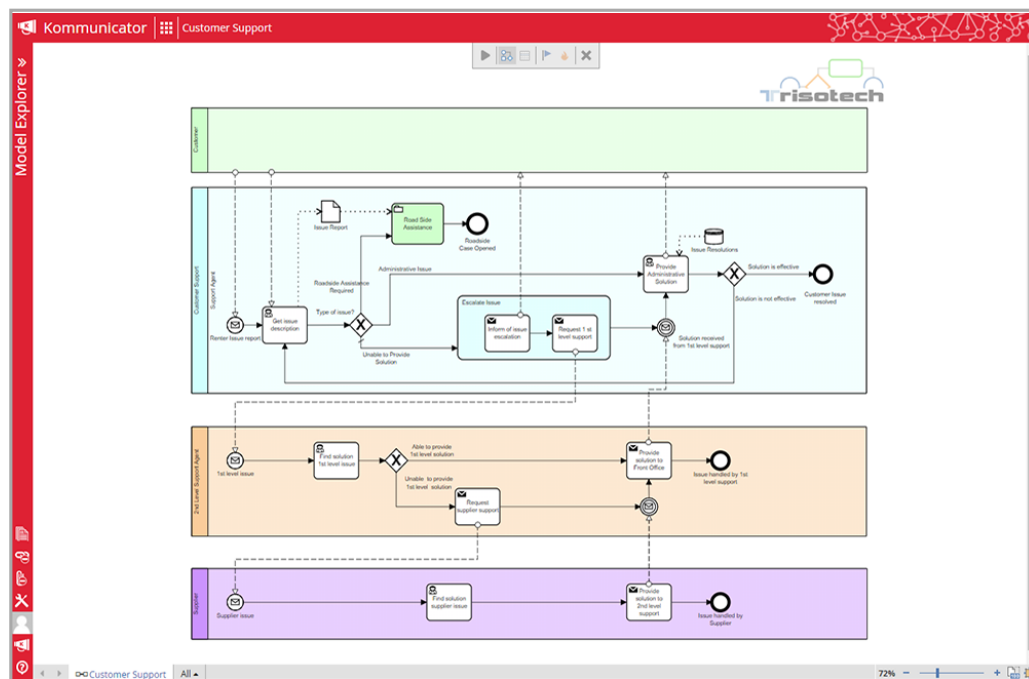




Kommunicator



The Kommunicator is the ideal tool to disseminate information and facilitate communication in support of organizational change management and digital transformation. It allows knowledge workers to review strategies and operations and to adopt them in their everyday activities. The Kommunicator is a viewer application that can act as an enterprise portal to access any models created using the Trisotech Digital Enterprise Suite. With the Kommunicator, models created using recognized modeling standards and canvases are shared in a permission-based, read-only environment. Users that have been granted permission can navigate and visualize models. They can also view a multimedia step-by-step animation of operational models.

The Kommunicator enables organizations to:

- Communicate strategy, information and manage change throughout transformational projects
- Share Trisotech models in a permission-based, read-only environment
- Allow knowledge workers to review strategies and operational practices
- Train the teams as the changes are operationalized throughout the organization
- Animate in multimedia the step by step operational models to facilitate learning
- Audit the processes

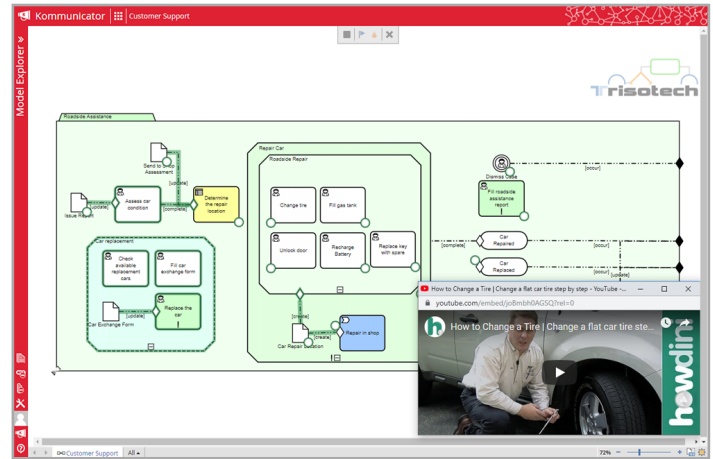


Kommunicator



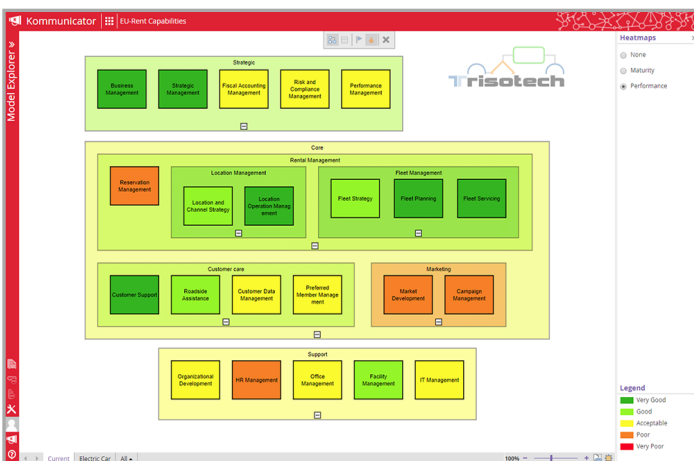
Consult models and canvases

- Step into a model to see its details (time, cost, value, quality, description, comments, related entities, attachments)
- Use heatmaps and overlays to get an overview of the details
- Access and navigate related models and their documentation using hyperlinks
- Access different views of the information in the same model
- Share models with a short URL with your organization's teams



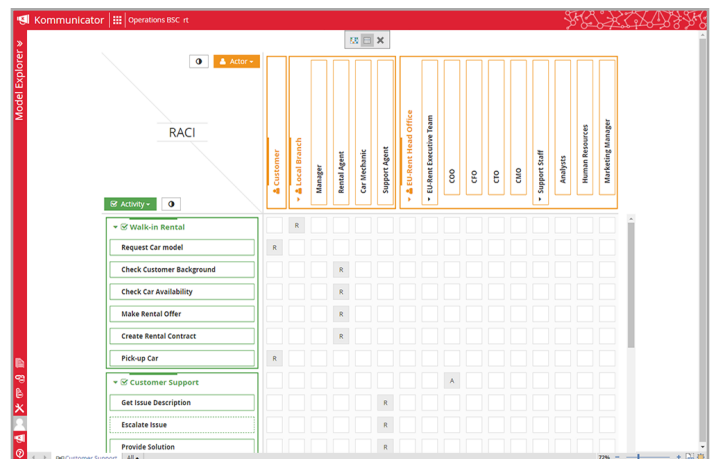
Access different available views for each operational model

- Get a high-level representation of process flows, decision requirements, case files and business capabilities using a visual depiction
- Get detailed representation of models using other various available views, including RACI charts, user stories and relationships between elements



Animate standard-based operational models

- Animate the BPMN, CMMN, and DMN models step by step to understand their behavior
- Follow the logic across linked models



Part of the Digital Enterprise Suite

The Digital Enterprise Suite is a complete collaborative cloud-based visualization, innovation, transformation and improvement software suite. It enables non-technical business people to align strategies to operations while considering both the outside-in and inside-out perspectives.

Trisotech's customers gain competitive advantage by obtaining unique insights from the various models created using the Suite, harnessing the power of the Trisotech Digital Enterprise Graph – a semantic model of your organization.

For more information, contact us at sales@trisotech.com or see our website for more details at www.trisotech.com. All products in the Digital Enterprise Suite run in most modern browsers on desktops, laptops, tablets and mobile devices.