

Digital Modeling Suite

Create a Digital Twin of your Organization Using Visual Models

The Digital Modeling Suite is a simple browser-based suite of visual applications that are intuitive enough for business users, yet sufficiently powerful to delight IT users. It brings together creative thinking and critical thinking, using recognized methods to guide and capture brainstorming sessions and structured operational models. It allows organizations to align operations to strategic intent all the way through to analysis and automation. The Digital Modeling Suite is a complete set of visual modeling applications, that captures the DNA of your organization in a digital twin.



“Trisotech Digital Modeling Suite helps us with change management and defining clear roles and responsibilities, in our shift to eCommerce. It also facilitates employee adoption as it is one thing to implement new systems and processes, but another one to get people adhering to it. Our transformation is a great success thanks to the Digital Modeling Suite.”

Director, Business Solutions
National Retailer with over 260 stores in Canada

Our clients **use the Digital Modeling Suite** to succeed in:

- Creating a digital twin of their organization
- Mastering digital transformation
- Developing and deploying digital strategies
- Managing organizational change
- Achieving operational excellence
- Standardizing processes and decision-making

Intuitive Visual Modeling



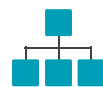
Capture and analyze strategies



Design customer journeys and empathy maps



Model and architect business capabilities



Align operations to strategies, architectures and frameworks



Assign responsibilities to key actors



Trace relationships between elements



Validate and animate operational models



Collaborate and share knowledge work



Foundation Applications



DISCOVERY ACCELERATOR

Discover and document the who, what, where and why of how things get done in your organization.



WORKFLOW MODELER

Create interactive documentation of existing and desired business processes as analyzable and executable workflows.



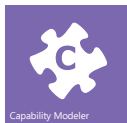
DECISION MODELER

Build explainable and traceable business decisions through simple visual modeling of the requirements and business logic.



CASE MODELER

Document case-oriented business processes and drive process-improvement efforts for knowledge work.



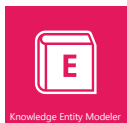
CAPABILITY MODELER

Capture and define the basic building blocks of your organization to align operations to strategic intent.



LANDSCAPING

Capture strategic brainstorming sessions with electronic sticky notes and recognized creative thinking methods.



KNOWLEDGE ENTITY MODELER

Specify business vocabularies of commonly use terms and their exact meanings for unambiguous communications across organization.



Options



DIGITAL ENTERPRISE GRAPH

Generates a semantic model of your organization that fuels reusability, traceability and visualization across models created with the Digital Modeling Suite.



SOCIALIZATION

Use Ideation for real-time contribution of ideas from team members using their own devices and the Kommunikator to disseminate information through an enterprise-wide portal.

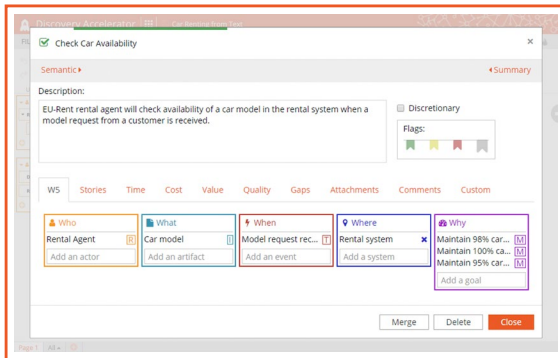


DISCOVERY ACCELERATOR

The Discovery Accelerator is a web-based application for non-technical business users, used to organize together business goals, activities, systems, stakeholders and events. Users can start from existing documentation, from brainstorming sessions, or from unearthing user stories. This simple drag and drop application accelerates the discovery of key business entities, the analysis of their interrelationships, and visually exposes any gaps. The models created with the Discovery Accelerator can be exported in various formats for documentation or further business modeling.

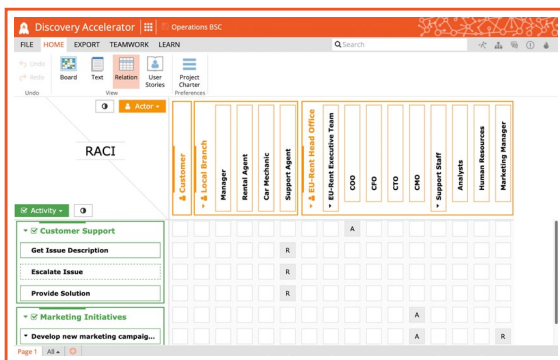
The Discovery Accelerator enables business subject matter experts to:

- Capture the “who, what, when, where, why and how” (HW5) of an organization
- Accelerate discovery using existing corporate documentation and industry frameworks
- Specify business goals and how they relate to activities, actors, artifacts, events and systems
- Analyze the interrelationships of created entities using visual charts
- Capture and analyze time, cost, value and quality metrics for activities
- Export information for documentation, input to strategic planning or modeling activities



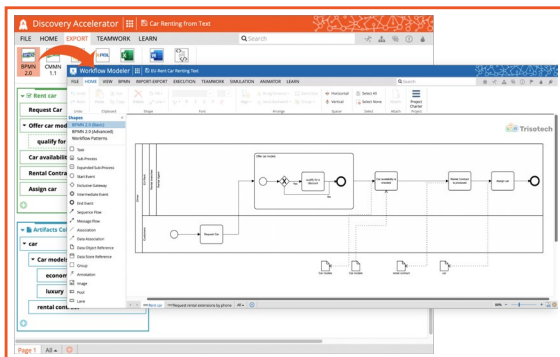
Discover and Document Business Entities

- Define activities, actors, artifacts, events, systems and goals of business operations
- Define interrelations and hierarchies of entities using drag and drop and text auto-completion
- Create a new project as a blank board, or based on a W5, balanced scorecard or SIPOC template
- Optionally use existing documentation and highlight text to create entities
- Optionally load predefined collections of elements from industry accelerators, including APQC, Panorama 360, FIBO and Disco



Enable Analysis of Entity Relationships

- Analyze roles and responsibilities by relating actors to activities, goals or artifacts in a RACI chart
- Analyze information flows by relating activities to their input and output artifacts
- Analyze event flows by relating activities to their trigger and result events
- Specify time, cost, value, and quality metrics for activities
- Easily identify missing or conflicting information with visual charts
- Create and maintain semantic links to corresponding elements in an industry framework or enterprise architecture tool



Collaborate and Share

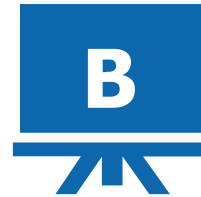
- Add comments to collections and elements for real-time team collaboration
- Create and manage various versions of the structures
- Export structures as BPMN, CMMN, UML, XPDN or Excel files
- Export structure documentation as MS-Word or HTML files

Part of the Digital Modeling Suite

The Digital Modeling Suite is a browser-based simple visual interface that is intuitive enough for business users, yet sufficiently powerful to delight IT users. It enables the capture of strategies, workflows, decisions and cases in a graphical modeling environment based on international standards. The Digital Modeling Suite is a complete set of visual modeling tools, from strategy to operations. The Discovery Accelerator is available through a Digital Modeling Suite subscription only.

Composed of the Digital Modeling Suite and the Digital Automation Suite, the Digital Enterprise Suite enables technical staff to encapsulate programmatic logic and lets non-technical business users to assemble the business logic to innovate, transform and improve.

For more information, contact us at sales@trisotech.com or see our website for more details at www.trisotech.com. All products of the Digital Modeling Suite run in most modern browsers on desktops, laptops, tablets and mobile devices.

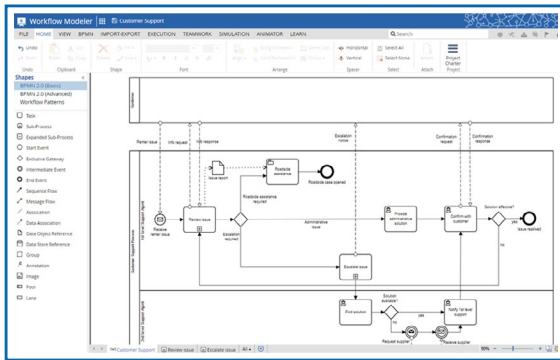


WORKFLOW MODELER

The Workflow Modeler is a web-based application used to document business processes and to drive process improvement initiatives. This application is used by both business and IT personnel to develop workflows as interactive documentation of existing and desired processes. Users can create complete workflow models that can be easily published as web services in one click. The Workflow Modeler creates models as per the Business Process Model and Notation (BPMN 2.0) standard, ensuring optimal interoperability with other compliant software applications.

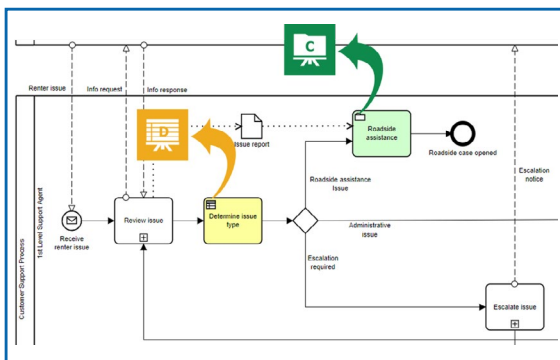
The Workflow Modeler allows business and IT users to:

- Create graphical workflow models
- Animate workflows, using links to video and other resources to illustrate process steps
- Collaborate using comments and animations
- Maintain alignment with reference frameworks or enterprise architecture
- Accelerate model creation with standard workflow patterns
- Bridge the gap between workflow modeling and implementation
- Simulate scenarios to predict outcomes and analyze for improvement



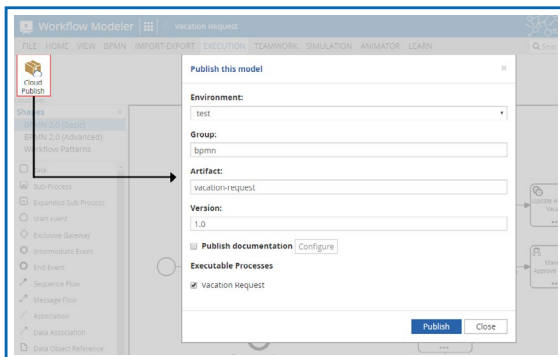
Document Business Processes

- Create BPMN 2.0 process, collaboration and choreography diagrams
- Import models from the Trisotech Discovery Accelerator or from BPMN, XML Process Definition Language (XPDL), MS-Project, MS-Visio or Fluxicon Disco files
- Incorporate pre-defined workflow patterns
- Improve BPMN knowledge via just-in-time eLearning (add-on required)



Develop Workflows as Interactive Documentation

- Link a case task to a Case Modeler case
- Link a decision task to a Decision Modeler decision
- Link from a Case Modeler process task to a Workflow
- Create semantic links to industry frameworks and enterprise architecture tools
- Add documentation to workflow elements and models
- Add comments for real-time team collaboration



Analyze, Publish and Share

- Validate workflow models against the BPMN 2.0 standard
- Animate workflows with multimedia attachments to interactively step through the logic
- Export executable workflow models
- Export workflow diagrams as documentation
- Publish workflows as web services for automation (Digital Automation Suite required)
- Create simple pre-defined simulation scenarios and flexible expert simulations (add-on required)

Part of the Digital Modeling Suite

The Digital Modeling Suite is a browser-based simple visual interface that is intuitive enough for business users, yet sufficiently powerful to delight IT users. It enables the capture of strategies, workflows, decisions and cases in a graphical modeling environment based on international standards. The Digital Modeling Suite is a complete set of visual modeling tools, from strategy to operations. The Workflow Modeler is available through a Digital Modeling Suite subscription only.

Composed of the Digital Modeling Suite and the Digital Automation Suite, the Digital Enterprise Suite enables technical staff to encapsulate programmatic logic and lets non-technical business users to assemble the business logic to innovate, transform and improve.

For more information, contact us at sales@trisotech.com or see our website for more details at www.trisotech.com. All products of the Digital Modeling Suite run in most modern browsers on desktops, laptops, tablets and mobile devices.

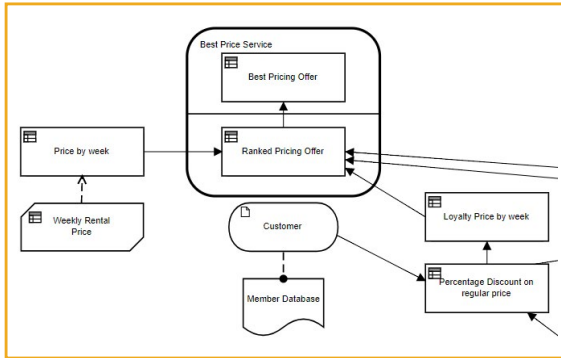


DECISION MODELER

The Decision Modeler is a web-based application used to build business decisions that are both explainable and traceable. Using a simple graphical user interface, business and IT users can collaborate to specify both the requirements and the logic of decisions. These fully specified decisions can then be directly automated. The Decision Modeler is based on the Decision Model and Notation (DMN) open standard, ensuring optimal interoperability and compliant execution.

The Decision Modeler enables business and IT users to:

- Create graphical decision models
- Standardize organizational decisions
- Capture decision logic using easy-to-read decision tables
- Capture decision logic using advanced programmatic techniques
- Model decisions to be included in workflows or cases
- Collaborate on decision models



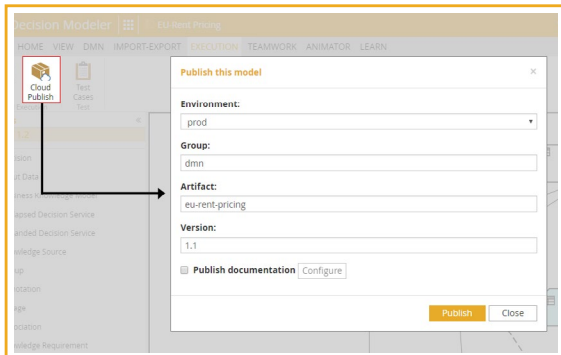
Build Explainable and Traceable Business Decision Models

- Create production grade DMN-compliant decision models
- Decompose complex decisions into sub-decisions and requirements
- Identify reusable decision logic in decision services or business knowledge models
- Identify knowledge sources and create authority requirement links
- Identify input data, and create information requirement links to show dependencies
- Ensure complete governance and versioning of decision models

P	Requested Vehicle Class	Membership Level	Promotions Code	Upgrade Based On Promotion Code
	VehicleClass "Economy", "Compact", "Full Size"	MembershipLevel "Gold", "Silver", "None"	PromotionsCode "Promo A", "Promo B"	Text "Compact", "Economy", "Full Size"
1	"Economy"	"Gold"	"Promo A"	"Compact"
2	"Economy"		"Promo B"	"Full Size"
3	"Economy"	"Silver"	"Promo A"	"Compact"
4	"Compact"			"Compact"
5	"Full Size"			"Full Size"
6	"Economy"		"Promo B"	"Compact"
7	"Compact"			"Full Size"

Specify the Logic of Decision Models

- Create decision tables that connect inputs to outputs using rules and calculations
- Capture advanced decision logic using programmatic techniques such built-in Friendly Enough Expression Language (FEEL) functions and boxed expressions
- Include predictive models into decisions
- Re-use existing elements via a platform-wide dictionary or include external models
- Validate decision logic using the Decision Animator and create test cases



Enhance, Share and Publish

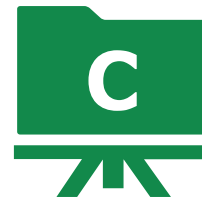
- Add comments to elements for real-time team collaboration
- Link a decision task from the Workflow Modeler or the Case Modeler to a Decision Modeler decision
- Export decision requirement diagrams as documentation
- Export executable DMN decision models
- Publish decisions as web services for automation (Digital Automation Suite required)

Part of the Digital Modeling Suite

The Digital Modeling Suite is a browser-based simple visual interface that is intuitive enough for business users, yet sufficiently powerful to delight IT users. It enables the capture of strategies, workflows, decisions and cases in a graphical modeling environment based on international standards. The Digital Modeling Suite is a complete set of visual modeling tools, from strategy to operations. The Decision Modeler is available through a Digital Modeling Suite subscription only.

Composed of the Digital Modeling Suite and the Digital Automation Suite, the Digital Enterprise Suite enables technical staff to encapsulate programmatic logic and lets non-technical business users to assemble the business logic to innovate, transform and improve.

For more information, contact us at sales@trisotech.com or see our website for more details at www.trisotech.com. All products of the Digital Modeling Suite run in most modern browsers on desktops, laptops, tablets and mobile devices.

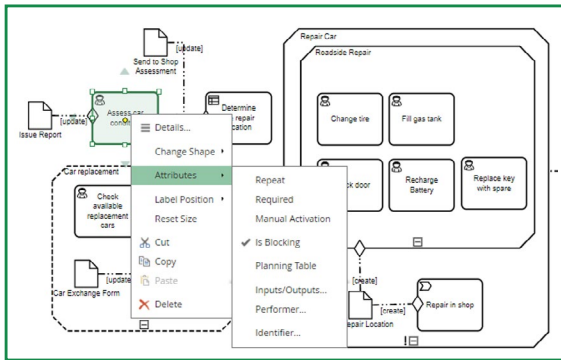


CASE MODELER

The Case Modeler is a web-based application used to document case-oriented business processes and to drive process improvement efforts for knowledge work. This application is used by both business and IT personnel to develop case models as interactive documentation of existing and desired case-oriented processes. Users can create complete case models that can be easily published as web services in one click. The Case Modeler creates models as per the Case Management Model and Notation (CMMN) standard, ensuring optimal interoperability with other compliant software applications.

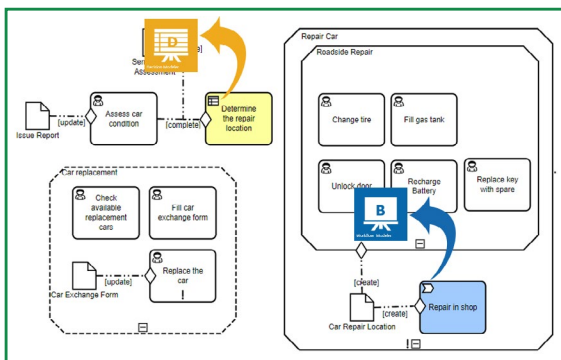
The Case Modeler enables business and IT users to:

- Create graphical case management models
- Link business events, data and documents to actions
- Animate cases using links to video and other resources to illustrate case stages
- Collaborate on case models using comments and animations
- Maintain alignment with reference frameworks or enterprise architecture
- Bridge the gap between case modeling and implementation



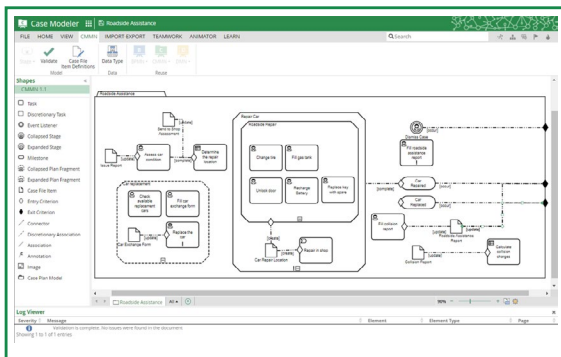
Document Case-Oriented Business Processes

- Create CMMN case models for less-repeatable, event-driven, content-centric business scenarios that depend on ad hoc runtime decisions by knowledge workers
- Identify stages, content, mandatory and discretionary tasks, milestones, manual and automated decisions, events, and their interrelationships
- Import models from CMMN files



Develop Case Models as Interactive Documentation

- Link a process task to a Workflow Modeler workflow
- Link a decision task to a Decision Modeler decision
- Link from a Workflow Modeler case task to a case
- Create semantic links to industry frameworks and enterprise architecture tools
- Add documentation to case elements and models
- Add comments for real-time team collaboration



Analyze, Publish and Share

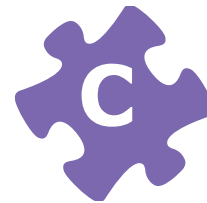
- Validate case models against the CMMN standard
- Animate cases with multimedia attachments to interactively step through the logic
- Export executable case models
- Export case diagrams as documentation
- Publish case models as web services for automation (Digital Automation Suite required)

Part of the Digital Modeling Suite

The Digital Modeling Suite is a browser-based simple visual interface that is intuitive enough for business users, yet sufficiently powerful to delight IT users. It enables the capture of strategies, workflows, decisions and cases in a graphical modeling environment based on international standards. The Digital Modeling Suite is a complete set of visual modeling tools, from strategy to operations. The Case Modeler is available through a Digital Modeling Suite subscription only.

Composed of the Digital Modeling Suite and the Digital Automation Suite, the Digital Enterprise Suite enables technical staff to encapsulate programmatic logic and lets non-technical business users to assemble the business logic to innovate, transform and improve.

For more information, contact us at sales@trisotech.com or see our website for more details at www.trisotech.com. All products of the Digital Modeling Suite run in most modern browsers on desktops, laptops, tablets and mobile devices.

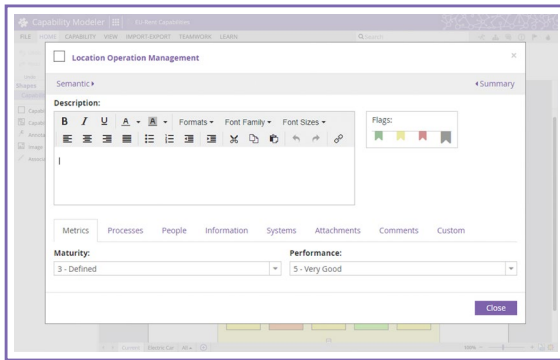


CAPABILITY MODELER

The Capability Modeler is a cloud-based strategic planning and business architecture application for capturing and defining the basic building blocks of your organization. Map business capabilities and their relationships to operations in an easy-to-use environment designed for business users. Align operations to strategic intent using this high-level common definition of what the business does.

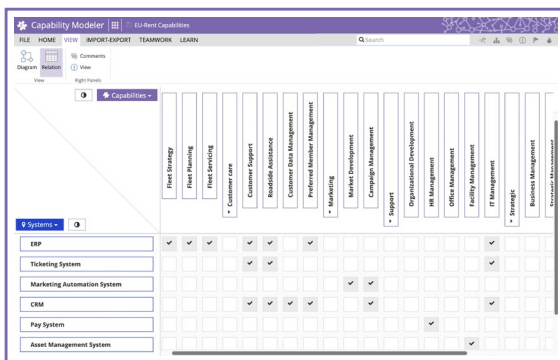
The Capability Modeler enables business subject matter experts to:

- Create graphical business capability models understandable by both business and IT stakeholders
- Map relationships between capabilities and people, processes, systems and information
- Track impact of strategic and tactical decisions on capability map
- Achieve capability planning and evaluate needs involved in future initiatives
- Assess business capability on maturity and performance metrics
- Categorize strategic, core and support capabilities to help manage in-sourced and out-sourced capabilities



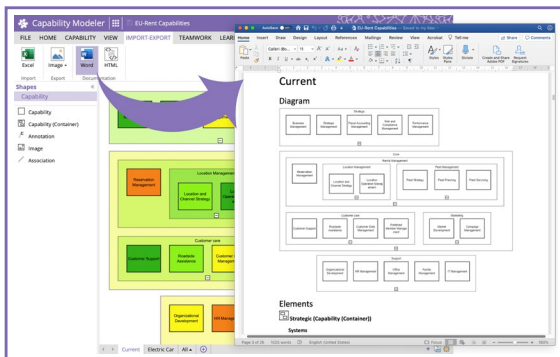
Create business capability models

- Drag and drop capabilities to create a capability model
- Organize capabilities using containers
- Expand or collapse the details of the capability hierarchy
- Create visual capability granularity levels
- Start from scratch or import Excel documents
- Identify the underlying people, processes, information and systems that enable the capability
- Assign Maturity and Performance metrics to capabilities



Analyze models

- Use a relationship matrix to obtain a summary of all enablers of capabilities
- Easily identify missing or conflicting information
- Quickly modify the enablers of capabilities
- Use Performance and Maturity heatmaps for a visual representation of current and desired states



Collaborate and Share

- Add comments to collections and elements for real-time team collaboration
- Create and manage various versions of the structures
- Export capability model documentation as MS-Word or HTML files
- Export capability diagram as an image

Part of the Digital Modeling Suite

The Digital Modeling Suite is a browser-based simple visual interface that is intuitive enough for business users, yet sufficiently powerful to delight IT users. It enables the capture of strategies, workflows, decisions and cases in a graphical modeling environment based on international standards. The Digital Modeling Suite is a complete set of visual modeling tools, from strategy to operations. The Capability Modeler is available through a Digital Modeling Suite subscription only.

Composed of the Digital Modeling Suite and the Digital Automation Suite, the Digital Enterprise Suite enables technical staff to encapsulate programmatic logic and lets non-technical business users to assemble the business logic to innovate, transform and improve.

For more information, contact us at sales@trisotech.com or see our website for more details at www.trisotech.com. All products of the Digital Modeling Suite run in most modern browsers on desktops, laptops, tablets and mobile devices.

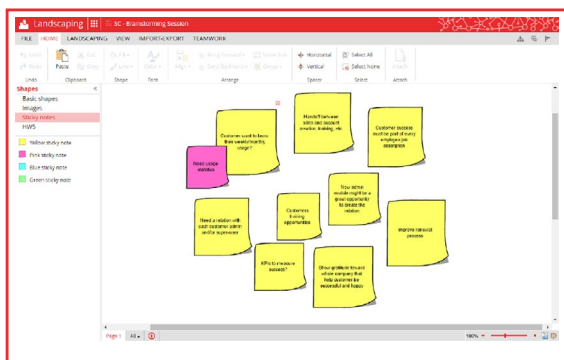


LANDSCAPING

Landscaping is a cloud-based strategic planning and lightweight business architecture tool. Creative strategic thinking and unconstrained brainstorming is supported with electronic sticky notes to capture quality ideas in an intuitive and easy-to-use environment. Create business architecture blueprints to bridge the gap between strategic brainstorming and the operations of your organization.

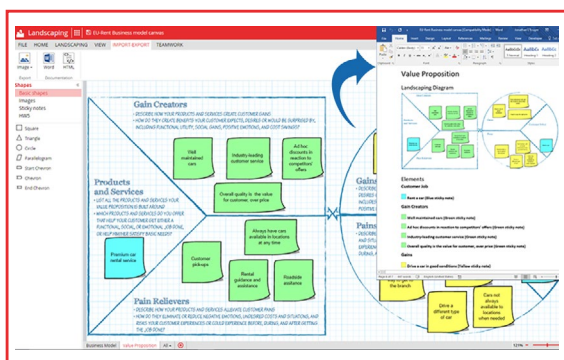
Landscaping enables strategic planners, analysts and architects to:

- Collaborate with relevant stakeholders to rapidly obtain consensus on strategy formulation
- Easily capture creative strategic brainstorming sessions on an electronic whiteboard
- Save whiteboards and models in shared folders for sustainability and availability of information
- Use recognized methods and visual canvases to help develop ideas
- Rationalize ideas and transform brainstorming notes into reusable operational elements
- Organize ideas and operational elements into meaningful business structures
- Relate different views of their business architecture
- Create a shared mental model via navigable visual maps of their business architecture



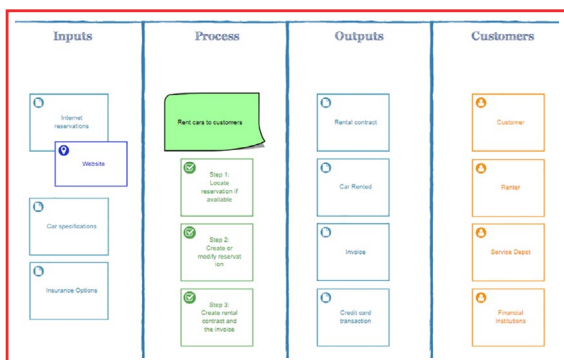
Start from scratch on a digital whiteboard or use recognized methods and visual canvases to guide you as you develop ideas

- Use electronic sticky notes, simple shapes or import images to formulate ideas
- Work with recognized canvases or request your own personalized ones
- Refer to canvas instructions for consistent capture and categorization of ideas
- Attach files of different formats to your notes from any source



Facilitate collaboration between teams and team members

- Have asynchronous working sessions using various iterative versions of the same document
- Host real-time crowdsourcing working sessions with team members via the Ideation tool from the Trisotech Digital Enterprise Suite
- Engage others with social commenting to improve co-operation within your organization
- Generate electronic reports to easily capture the work done in the session and communicate ideas to other teams



Support visual representation of business architecture in a simple technological environment

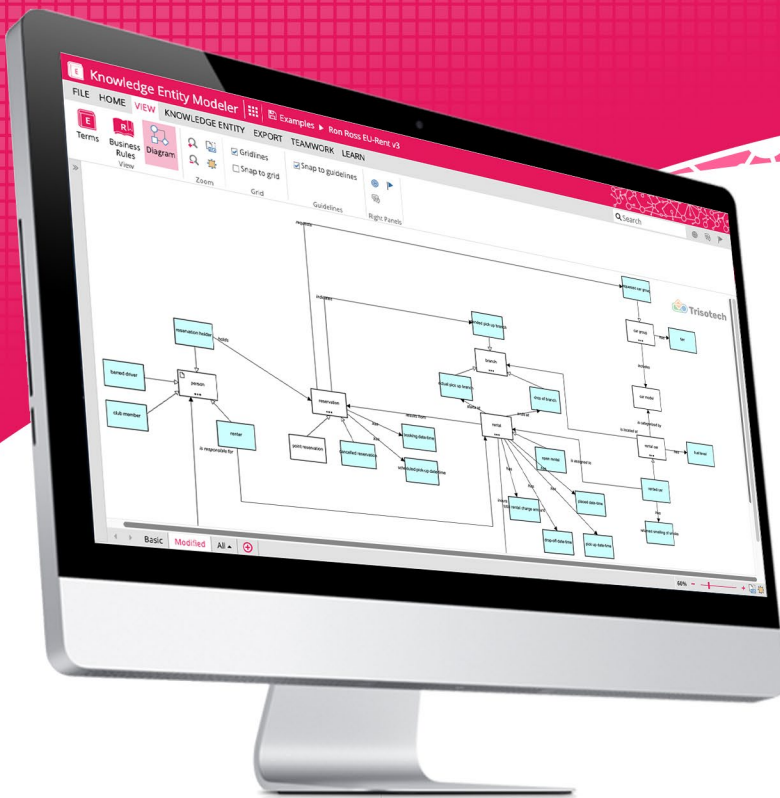
- Turn free-form ideas into meaningful business entities, such as actors, activities and events, reusable through the Digital Enterprise Graph and Trisotech modelers
- Hyperlink different canvases and whiteboards into the same document for a complete overview of your business structure
- Communicate business structure and vision through your organization to foster operations-to-strategies alignment

Part of the Digital Modeling Suite

The Digital Modeling Suite is a browser-based simple visual interface that is intuitive enough for business users, yet sufficiently powerful to delight IT users. It enables the capture of strategies, workflows, decisions and cases in a graphical modeling environment based on international standards. The Digital Modeling Suite is a complete set of visual modeling tools, from strategy to operations. Landscaping is available through a Digital Modeling Suite subscription only.

Composed of the Digital Modeling Suite and the Digital Automation Suite, the Digital Enterprise Suite enables technical staff to encapsulate programmatic logic and lets non-technical business users to assemble the business logic to innovate, transform and improve.

For more information, contact us at sales@trisotech.com or see our website for more details at www.trisotech.com. All products of the Digital Modeling Suite run in most modern browsers on desktops, laptops, tablets and mobile devices.

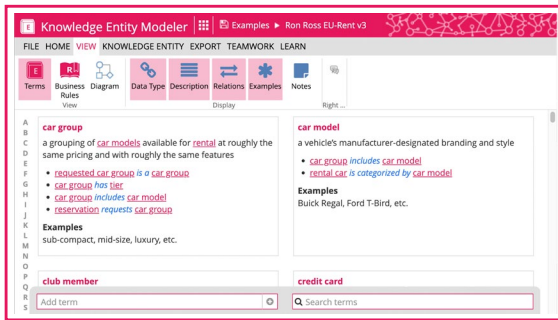


KNOWLEDGE ENTITY MODELER

The Knowledge Entity Modeler is a simple to use, meaning-centric web application that ensures clear and unambiguous communications across an organization. Business and IT users can jointly specify business vocabularies containing the terms they commonly use along with their exact meanings. Concept maps, logical information structures, and business rules can also be specified providing a clear expression of meaning to the organization. The resulting semantically rich common business language is reusable in narrative communications, business process, case and decision models, as well as in software applications specifications.

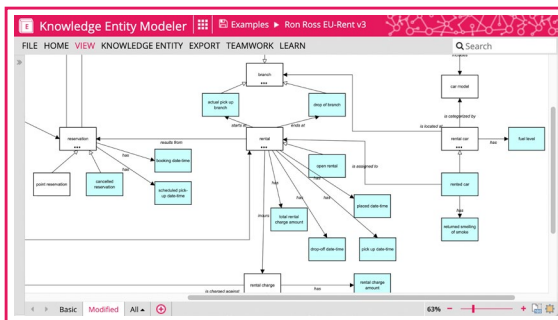
The Knowledge Entity Modeler enables business and IT users to:

- Collaborate on the creation of common vocabularies and rule books
- Graphically capture business concepts and inter-relationships
- Define business terms and their exact meaning
- Specify both structural and behavioral business rules
- Specify the logical information structure of selected business entities



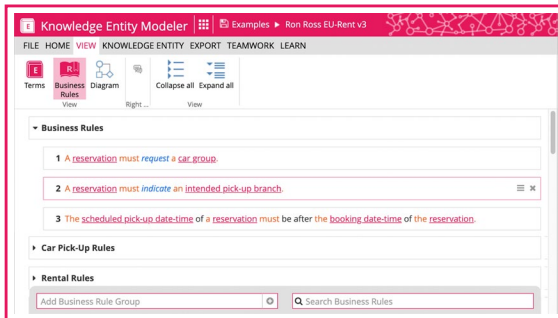
Create Business Vocabularies

- Provide clear unambiguous definitions for common business terms
- Define preferred terms and their alternatives
- Add examples of term usage
- Specify sources of business terms' definition
- Generate a glossary for the organization



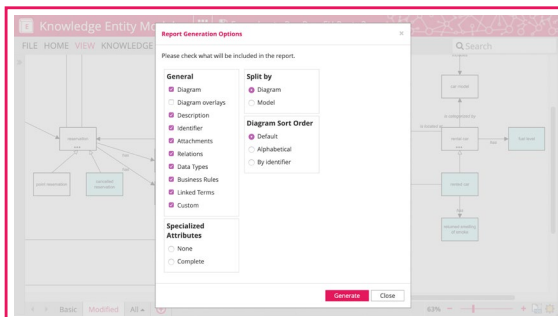
Create Concept Maps

- Drag and drop shapes on a canvas to create a concept map
- Assign terms and definitions to concepts
- Visually assemble concepts by linking terms to one another and specifying their relation
- Define logical information structures for concepts that refer to data objects



Specify Business Rules

- Define and organize business knowledge using structural business rules
- Define constraints for business activities using behavioral business rules
- Use color coded terms and relations to create rules
- Leverage text autocompletion to reuse terms across vocabularies



Develop Interactive Knowledge Documentation

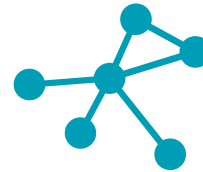
- Add multimedia attachments to business concepts
- Initiate a comment stream for real-time team collaboration on any element
- Export concept maps, terms, and business rules as documentation

Part of the Digital Modeling Suite

The Digital Modeling Suite is a browser-based simple visual interface that is intuitive enough for business users, yet sufficiently powerful to delight IT users. It enables the capture of strategies, workflows, decisions and cases in a graphical modeling environment based on international standards. The Digital Modeling Suite is a complete set of visual modeling tools, from strategy to operations. The Knowledge Entity Modeler is available through a Digital Modeling Suite subscription only.

Composed of the Digital Modeling Suite and the Digital Automation Suite, the Digital Enterprise Suite enables technical staff to encapsulate programmatic logic and lets non-technical business users to assemble the business logic to innovate, transform and improve.

For more information, contact us at sales@trisotech.com or see our website for more details at www.trisotech.com. All products of the Digital Modeling Suite run in most modern browsers on desktops, laptops, tablets and mobile devices.



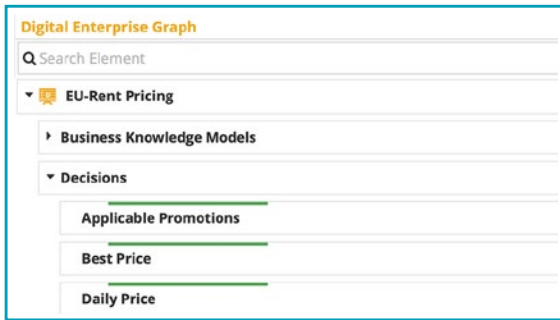
OPTION

DIGITAL ENTERPRISE GRAPH

The Digital Enterprise Graph enables global reuse of modeling elements across your organization. It is a digital twin of your organization automatically generated from all your existing models. This semantic digital twin provides insight into all modeling elements created across all your models and the various relationships that exist amongst them. Business vocabularies (terms and definitions) that are created are also included in the graph and can be reused. The Digital Enterprise Graph fuels reasoning capabilities of the who, what, when, where, why and how captured in your models. The relationships between modeling elements in the graph can be detected, explored, and leveraged, while maintaining traceability between the reused modeling elements and the original models. The Digital Enterprise Graph can not only index models created using the Digital Modeling Suite, it can also index relationships to select third-party tools.

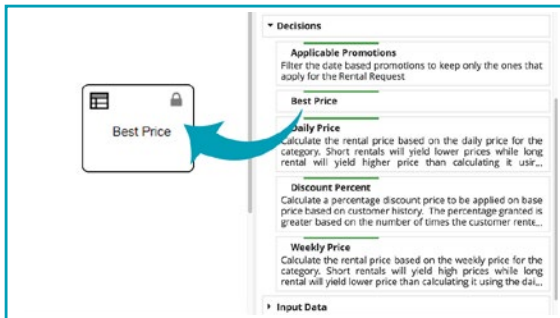
The Digital Enterprise Graph allows business and IT users to:

- Save time by reusing modeling elements from any model into another
- Build a reference architecture of modeling elements that can be reused across the organization
- Automatically propagate changes made to a source modeling element across all models that reuse it
- Build semantic links between actors, events, information, systems, goals, and activities
- Get insight into the organization's semantic digital twin



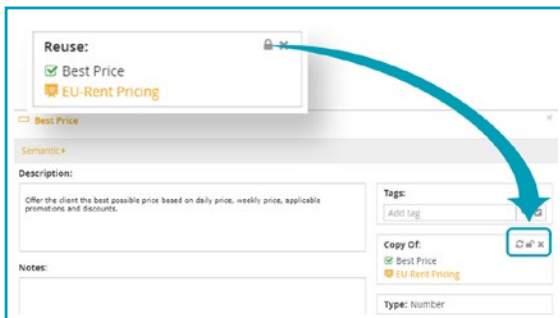
Reuse modeling elements

- Use the Digital Enterprise Graph panel to drag and drop a modeling element from an existing model.
- Search through or drill down all accessible models to find and reuse modeling elements.
- Highlight modeling elements in a current model that have been reused from another model.



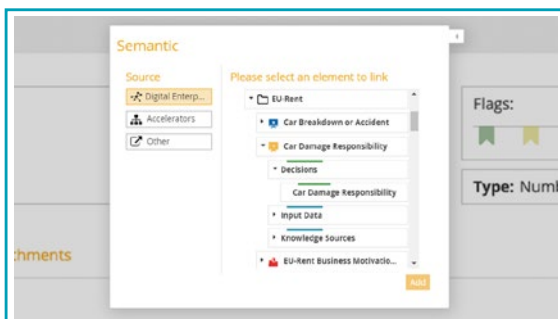
Reuse by reference

- Choose to work with a “single version of the truth” by creating references to modeling elements (modeling element is locked).
- When dragging a modeling element on the canvas, the modeling element is automatically locked and can only be modified from within the source model.
- If changes are made in the source model, they will be automatically reflected in all models that reference it.



Reuse by copy

- Alternatively, choose to work with “multiple versions of the truth” by creating copies of existing modeling elements (modeling element is unlocked).
- When working with an unlocked modeling element, the user can modify it locally without affecting the source model.
- A semantic link is maintained between the copy and the original modeling element that can be traced within the graph.
- At any time, a manual resync of the source can be initiated from the copy and the user can relock a modeling element to transition to a single version of the truth.



Create and analyze semantic links

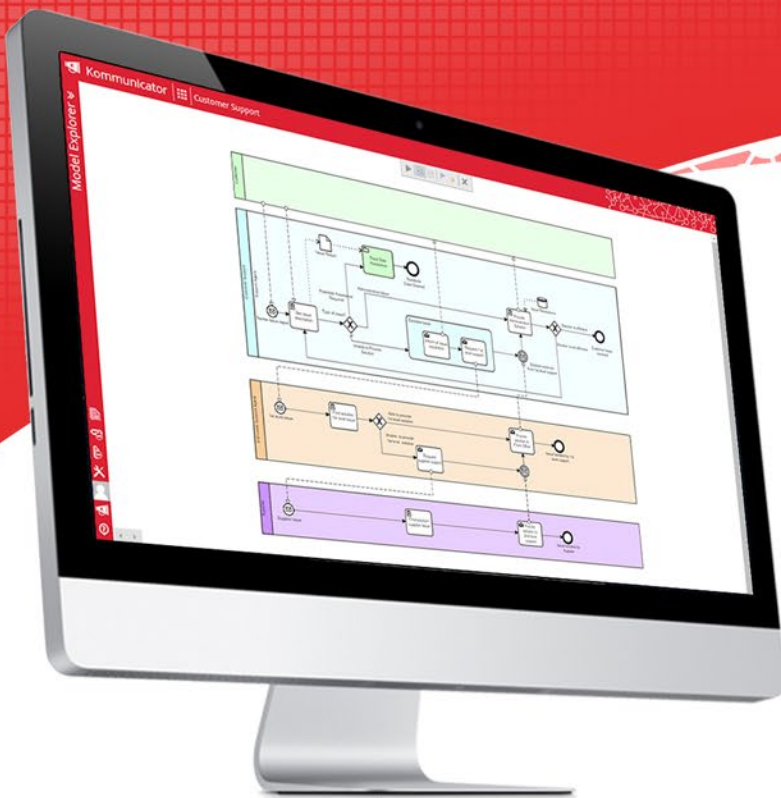
- Create and visualize semantic links between all modeling elements indexed in the graph.
- Reuse business vocabularies (terms and definitions) for modeling elements.
- Create queries and integrations to Digital Enterprise Graph via a SPARQL API that lets you access all modeling elements.

Part of the Digital Modeling Suite

The Digital Modeling Suite is a browser-based simple visual interface that is intuitive enough for business users, yet sufficiently powerful to delight IT users. It enables the capture of strategies, workflows, decisions and cases in a graphical modeling environment based on international standards. The Digital Modeling Suite is a complete set of visual modeling tools, from strategy to operations. Digital Enterprise Graph is an option of the Digital Modeling Suite.

Composed of the Digital Modeling Suite and the Digital Automation Suite, the Digital Enterprise Suite enables technical staff to encapsulate programmatic logic and lets non-technical business users to assemble the business logic to innovate, transform and improve.

For more information, contact us at sales@trisotech.com or see our website for more details at www.trisotech.com. All products of the Digital Modeling Suite run in most modern browsers on desktops, laptops, tablets and mobile devices.



 **SOCIALIZATION OPTION**
KOMMUNICATOR

Kommunicator is a web-based application part of the Socialization option of the Digital Modeling Suite. It is the ideal tool to disseminate information and facilitate communication in support of organizational change management and digital transformation. It allows knowledge workers to review strategies and operations and to adopt them in their everyday activities. Kommunicator is a viewer application that can act as an enterprise portal to access any models created using the Digital Modeling Suite. With Kommunicator, models created using recognized modeling standards and canvases are shared in a permission-based, read-only environment where users can visualize, navigate, and report issues on them.

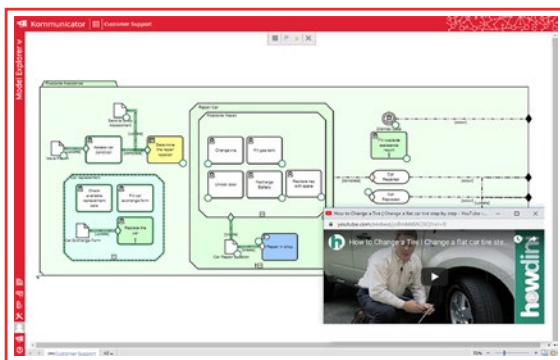
Kommunicator enables organizations to:

- Communicate strategic and operational information
- Share Trisotech models in a permission-based, read-only environment
- Allow knowledge workers to review strategies and operational practices
- Train the teams and operationalize change throughout the organization
- Animate in multimedia the step by step operational models



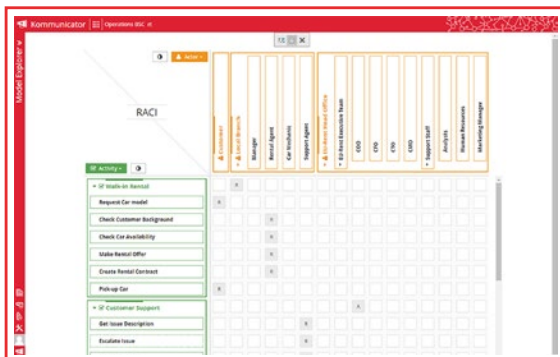
Consult models and canvases

- Step into a model to see its modeling elements details (time, cost, value, quality, description, comments, related entities, attachments)
- Use heatmaps and overlays to get an overview of the details
- Navigate through related models and their documentation using hyperlinks
- Report issues on models and comment on resolution threads
- Share models with a short URL with your organization's teams



Animate standard-based operational models

- Animate the Workflow, Case, and Decision models step by step to understand their behavior
- Follow the logic across linked models



Access different available views for each operational model

- Get a high-level representation of process flows, decision requirements, case files and business capabilities using a visual depiction
- Get detailed representation of models using other various available views, including RACI charts, user stories and relationships between elements

Part of the Digital Modeling Suite

The Digital Modeling Suite is a browser-based simple visual interface that is intuitive enough for business users, yet sufficiently powerful to delight IT users. It enables the capture of strategies, workflows, decisions and cases in a graphical modeling environment based on international standards. The Digital Modeling Suite is a complete set of visual modeling tools, from strategy to operations. Kommunicator is available through a Digital Modeling Suite subscription only.

Composed of the Digital Modeling Suite and the Digital Automation Suite, the Digital Enterprise Suite enables technical staff to encapsulate programmatic logic and lets non-technical business users to assemble the business logic to innovate, transform and improve.

For more information, contact us at sales@trisotech.com or see our website for more details at www.trisotech.com. All products of the Digital Modeling Suite run in most modern browsers on desktops, laptops, tablets and mobile devices.

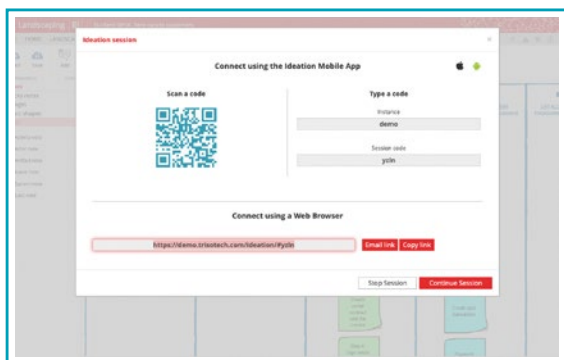


SOCIALIZATION OPTION **IDEATION**

Ideation is a mobile, tablet and web-based application part of the Socialization option of the Digital Modeling Suite. It enables real-time contribution of ideas from team members during work sessions. This crowd-sourcing application is available on any personal device and is used in combination with a Landscaping canvas during an in-person or a virtual work session. Simply invite participants to your current modeling work session via a QR code, a session code, or a short URL. Team members can then immediately contribute to your work in real-time using the Ideation application while you take advantage of the best ideas coming from different participants.

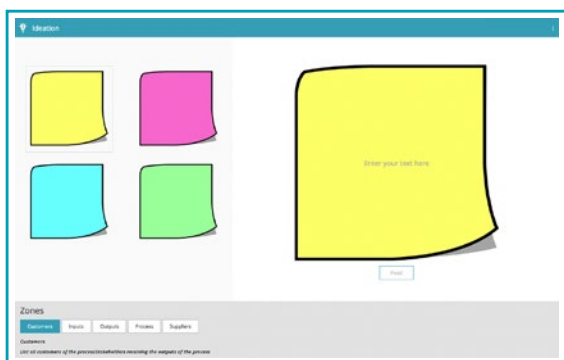
Ideation enables teams to:

- Broaden the scope of ideas beyond individual working sessions
- Increase quality and quantity of work by tapping on crowd knowledge
- Improve speed of consensus by facilitating co-operation
- Increase organizational sense of participation in achieving results



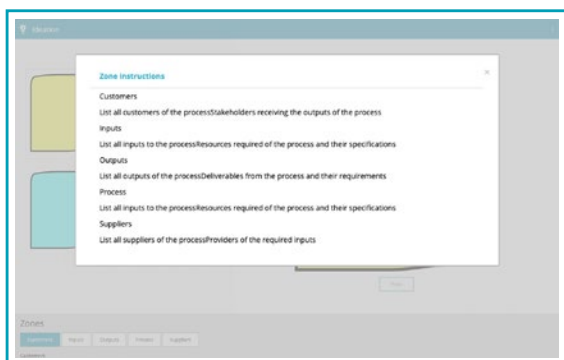
Be a session leader

- In Landscaping, under the Teamwork ribbon, start an Ideation session to get a session identifier.
- Share the session identifier and start receiving ideas from the crowd using their personal device.
- Move, change, or discard ideas once they have been reviewed with the work session participants.



Be a session participant

- Quickly connect to a session using a QR code, a session code, or a URL.
- Type an idea on an electronic sticky note and choose a color.
- Select where on the canvas you want your idea to be sent.
- Get documentation on a canvas' best practices to use the different zones.
- Directly send your idea onto the canvas without the need of a facilitator.



Download App



Google Play and the Google Play logo are trademarks of Google LLC.



App Store® and App Store® logo are trademarks of Apple Inc.

Part of the Digital Modeling Suite

The Digital Modeling Suite is a browser-based simple visual interface that is intuitive enough for business users, yet sufficiently powerful to delight IT users. It enables the capture of strategies, workflows, decisions and cases in a graphical modeling environment based on international standards. The Digital Modeling Suite is a complete set of visual modeling tools, from strategy to operations. Ideation is available through a Digital Modeling Suite subscription only.

Composed of the Digital Modeling Suite and the Digital Automation Suite, the Digital Enterprise Suite enables technical staff to encapsulate programmatic logic and lets non-technical business users to assemble the business logic to innovate, transform and improve.

For more information, contact us at sales@trisotech.com or see our website for more details at www.trisotech.com. All products of the Digital Modeling Suite run in most modern browsers on desktops, laptops, tablets and mobile devices.