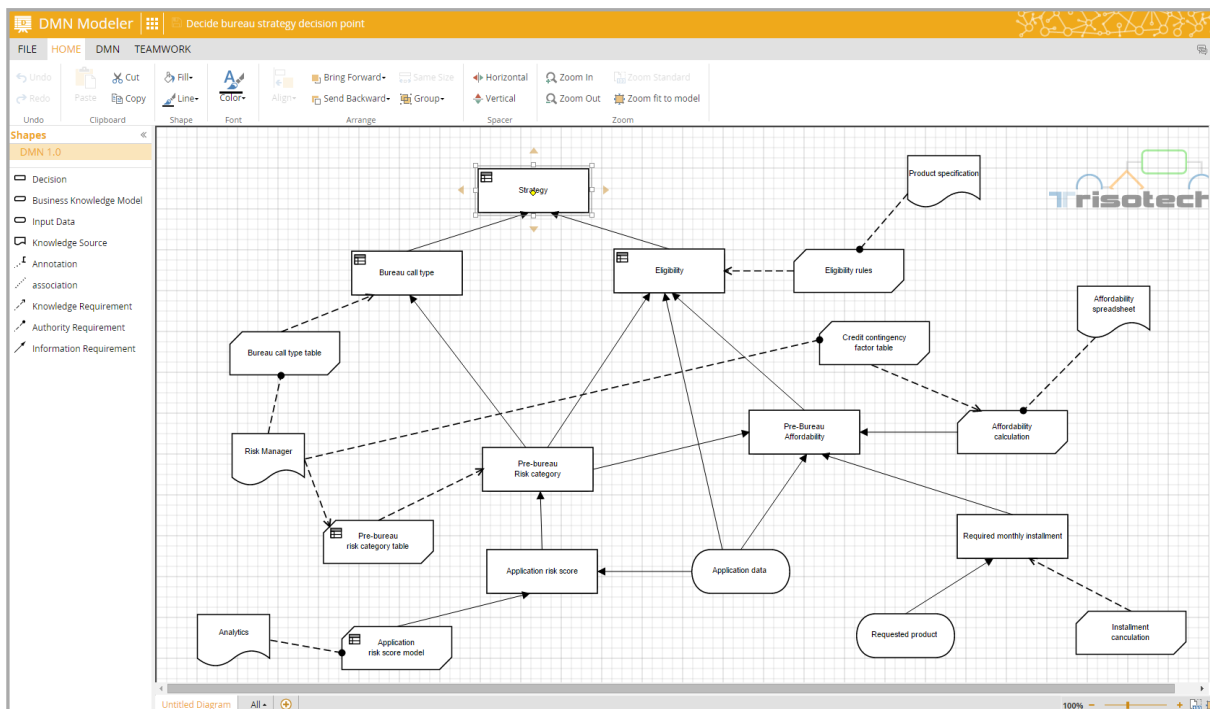


DMN Modeler



The Decision Model and Notation (DMN) Modeler is a web-based modeler using the industry-standard DMN notation. Use the DMN Modeler to model decisions based on your organization's business logic and rules.

The DMN Modeler enables business and process analysts to:

- Create graphical decision models understandable by business and IT stakeholders
- Standardize organizational rules and decision-making
- Collaborate on decision models
- Capture decision logic in easy-to-read decision tables
- Model decisions in the context of processes or cases

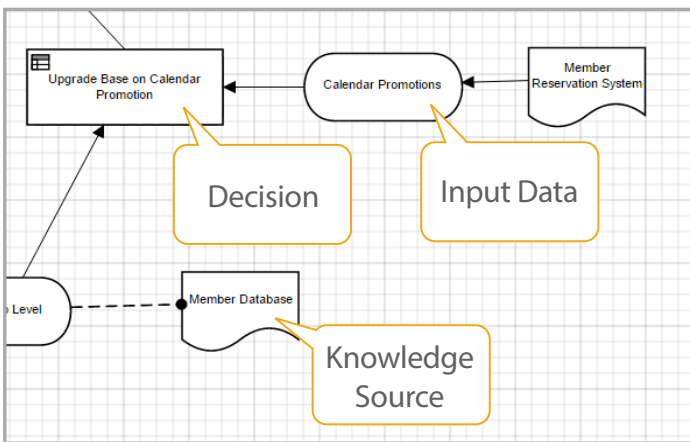


DMN Modeler



Create business-level decision requirements diagrams:

- Identify decisions and sub-decisions
- Identify reusable knowledge models, and create knowledge requirements links to show invocation by a decision or knowledge model
- Identify knowledge sources, and create authority requirements links to show dependencies and constraints
- Identify input data, and create information requirement links to show dependencies



Add automatable details to decision model elements:

- Create decision tables that connect inputs to outputs using rules and calculations
- Represent decisions as value expressions or decision tables
- Represent knowledge models as decision tables

Part of the Digital Enterprise Suite

The Digital Enterprise Suite provides tools for non-technical business people to discover, model and analyze your digital enterprise, exposing unique insights into relationships between models.

Constant alignment of models is enabled by an intelligent fabric: the Digital Enterprise Graph. Models created in the Digital Enterprise Suite tools, and in third-party enterprise architecture and modeling tools, become part of the Digital Enterprise Graph to build a global and unified business context from the bottom up.

Business analysts and architects use the DMN Modeler on its own to model business rules and decisions, or combine it with the BPMN or CMMN Modelers for modeling business decisions in the context of business processes.

The DMN Modeler is available as part of a Digital Enterprise Suite subscription. See the Trisotech website for pricing and a subscription configuration tool. All products in the Digital Enterprise Suite run in most modern desktop and mobile browsers.

Decision Table - Pre-bureau risk category table

UC	inputs		outputs	
	Existing Customer <small>Boolean (true, false)</small>	Application Risk Score <small>Number</small>	Pre-Bureau Risk Category <small>Collection (HIGH, MEDIUM, LOW, VERY LOW, DECLINE)</small>	Description
1	false	< 100	HIGH	
2	false	[100..120[MEDIUM	
3	false	[120..130]	LOW	
4	false	> 130	VERY LOW	
5	true	< 80	DECLINE	
6	true	[80..90]	HIGH	
7	true	[90..110]	MEDIUM	
8	true	> 110	LOW	

Close

Enhance model information for documentation and external alignment:

- Link from a BPMN Modeler decision task to a DMN Modeler decision
- Link from a CMMN Modeler to a DMN Modeler decision
- Add comments to elements for real-time team collaboration

