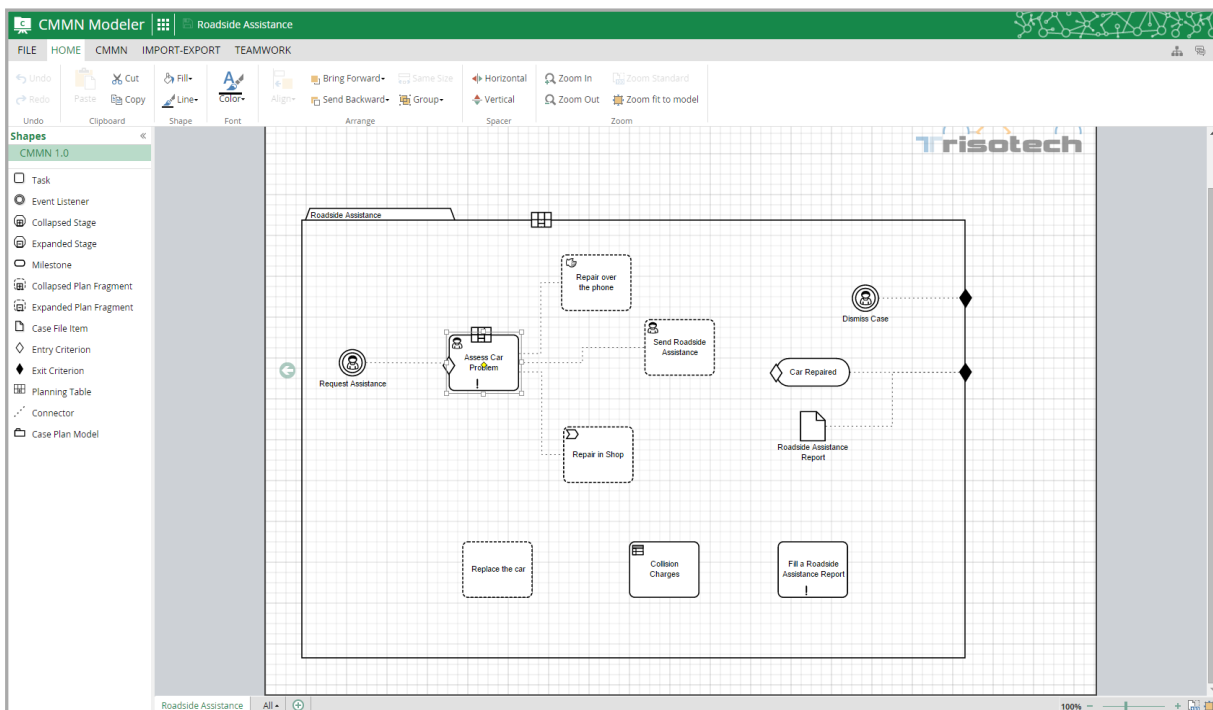




CMMN Modeler



The Case Management Model and Notation (CMMN) Modeler is a web-based modeler using the industry-standard CMMN notation. Use the CMMN Modeler to document case-oriented business processes to drive process improvement efforts for knowledge work. Create complete case models for export to a Business Process Management or Case Management System for case automation.

The CMMN Modeler enables business and process analysts to:

- Create graphical case management models understandable by business and IT stakeholders
- Link business events, data and documents to actions
- Collaborate on case models
- Maintain alignment with reference frameworks or enterprise architecture
- Bridge the gap between case modeling and implementation



CMMN Modeler

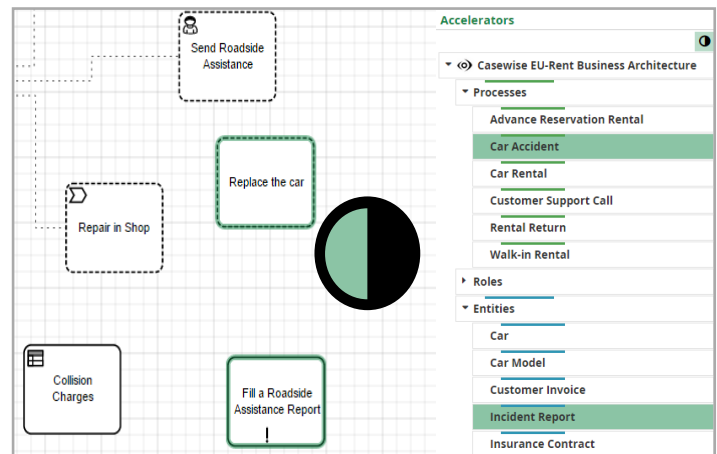
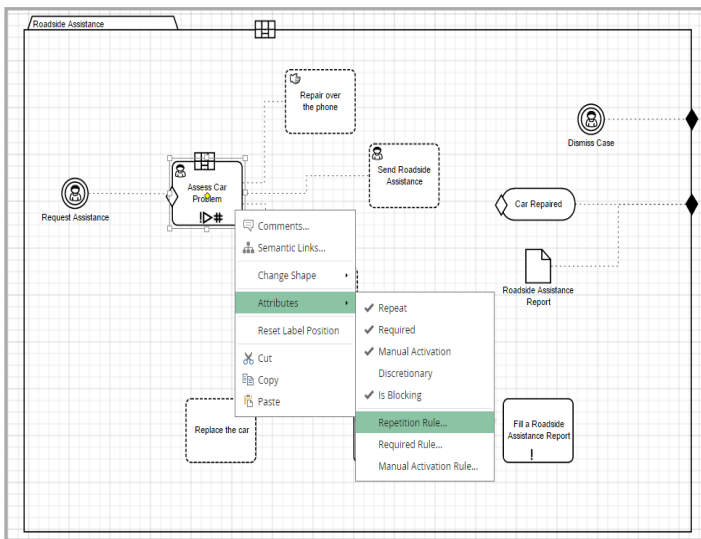


Create CMMN case models for less-repeatable, event-driven, content-centric business scenarios that depend on ad hoc runtime decisions by knowledge workers:

- Create CMMN diagrams
- Import models from the CMMN file format
- Define all design-time aspects of a case and its case plan model
- Identify stages, content, mandatory and discretionary tasks, milestones, manual and automated decisions, events, and their interrelationships

Enhance model information for documentation and external alignment:

- Link a process task to a BPMN Modeler process
- Link from a BPMN Modeler case task to a CMMN Modeler case
- Link a decision task to a DMN Modeler decision
- Create semantic links to industry frameworks and enterprise architecture tools
- Add comments to elements for real-time team collaboration



Export models for execution or documentation:

- Export executable models to CMMN
- Export case diagrams in image format to JPEG, PNG, TIFF and PDF formats

Part of the Digital Enterprise Suite

The Digital Enterprise Suite provides tools for non-technical business people to discover, model and analyze your digital enterprise, exposing unique insights into relationships between models.

Constant alignment of models is enabled by an intelligent fabric: the Digital Enterprise Graph. Models created in the Digital Enterprise Suite tools, and in third-party enterprise architecture and modeling tools, become part of the Digital Enterprise Graph to build a global and unified business context from the bottom up.

Process analysts use the CMMN Modeler on its own or with the BPMN and DMN Modelers as part of a case automation project; while business analysts combine it with the Discovery Accelerator for modeling improvement of less-repeatable processes.

The CMMN Modeler is available as part of a Digital Enterprise Suite subscription. See the Trisotech website for pricing and a subscription configuration tool. All products in the Digital Enterprise Suite run in most modern desktop and mobile browsers.